

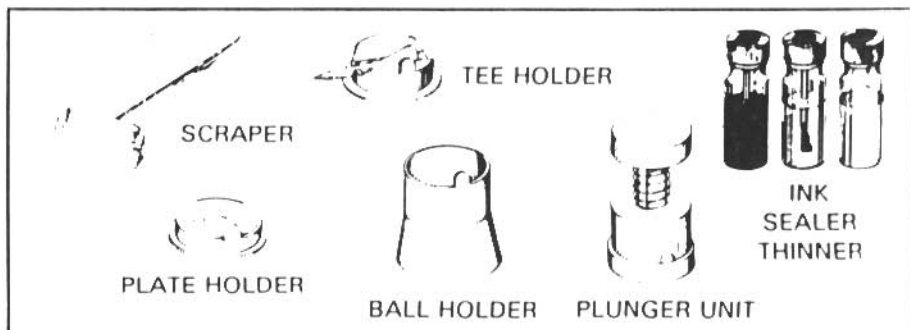
The NAME DROPPER™

Printing Machine

#10115

OWNER'S MANUAL

THE NAME DROPPER is a true printing machine and not a toy. Please read these instructions carefully before using your NAME DROPPER so that you will have the quality of a professionally printed golf ball.



BEFORE YOU START ...

PRINTING PAD

Check the surface of the rubber printing pad before printing. If the surface appears shiny, wipe the pad with a cloth or paper towel until the pad has a dull finish. Any lint or paper towel should be removed by lightly pressing a piece of cellophane tape to the pad to lift these particles.

INK

Shake the ink bottle well before using. Do not leave the cap off the bottle any longer than necessary, as the ink will evaporate and become too thick to print with. This is a fast drying ink, so work quickly.

PRINTING PLATE

To obtain one free plate, fill out the enclosed card and drop in the mail. When you receive your plate, remove the protective backing from the adhesive strip on the back and press the plate firmly into the plate holder.

PRINTING

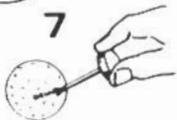
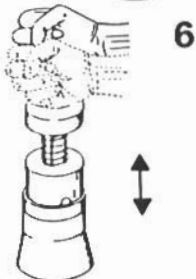
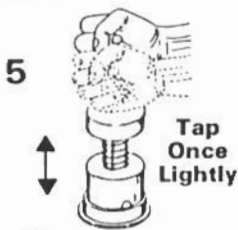
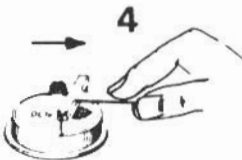
It is best to practice printing on an old ball or a piece of paper before you print on a golf ball. If you make a mistake on a ball, the ink can be removed with a tissue and a drop of thinner (provided). Old or dirty balls should be cleaned with a drop of thinner on a tissue prior to printing.

- INSTRUCTIONS -

1. Make sure the printing plate, scraper, and rubber printing pad are clean.
2. Press ball into ball holder so that the area you want to print is up.
3. Shake ink well, and using the applicator apply a small drop of ink to one side of name on the printing plate. (Only one imprint per inking. Wipe plate clean before re-inking.)

NOTE: Steps 4, 5, and 6 should be done quickly, as the fast drying ink may dry prematurely on plate or pad if too much time is taken between steps.

4. Using firm pressure with the index finger, draw the scraper blade across the plate once or twice to fill the engraved letters with ink, and scrape excess ink away from letters. Set scraper down on scrap paper, etc. Note: pressing too hard will scrape ink out of engraving and cause poor ink pick-up.
5. QUICKLY, fit the plunger unit over the plate holder, and tap down LIGHTLY AND RAPIDLY on printing plate ONE TIME ONLY. Your motion should be smooth and rapid. The plunger should not be held down on plate longer than $\frac{1}{2}$ second. (This action should "pull" ink from engraving.)
6. Quickly fit the plunger unit over the golf ball holder and tap the plunger lightly, contacting the golf ball in a smooth and rapid motion. The ball should now be imprinted.
7. Allow ink to dry for five minutes. Apply a very light coat of sealer, allow one minute to dry, apply a second coat and allow to dry for another 10 minutes.



NOTE: Ink can be removed from ball before sealer is applied using thinner and a paper tissue.

CLEAN UP

Cleaning the printing machine is very easy and will ensure the quality of future printing. The following steps should be followed whenever you put the machine away or are not planning on printing more balls within the next few minutes.

CLEANING THE RUBBER PRINTING PAD

Depress the plunger on a piece of scrap paper to remove excess ink. Then lightly press a piece of cellophane tape to the pad's surface. The sticky surface of the tape will pick up any excess ink from the pad. If the pad has an oily sheen, remove this sheen by wiping with a cloth or paper towel until the surface of the pad has a dull finish. Any particles of paper or lint can be removed with a piece of cellophane tape.

CLEANING THE PRINTING PLATE

A drop of thinner applied to the plate and a paper tissue are sufficient to clean the plate. Make sure that no ink is left in the letters or it will dry there and affect future printing quality.

CLEANING THE SCRAPER BLADE

Wipe the scraper blade carefully with a tissue (and a drop of thinner if needed) to remove all ink from blade.

USE THIS FORM TO ORDER ADDITIONAL PRINTING PLATES

Please print clearly, in the spaces provided below, the name which you want to print on ball/tee, and check one of the typesyles.

--	--	--	--	--	--	--	--	--	--	--	--

--	--	--	--	--	--	--	--	--	--	--	--

BLOCK LG. BLOCK SCRIPT

--	--	--	--	--	--	--	--	--	--	--	--

--	--	--	--	--	--	--	--	--	--	--	--

BLOCK LG. BLOCK SCRIPT

--	--	--	--	--	--	--	--	--	--	--	--

--	--	--	--	--	--	--	--	--	--	--	--

BLOCK LG. BLOCK SCRIPT

Examples of Typesyles

Shown Actual Size

Block (up to **11** characters per line)

**LOST BY
ARNIE JONES**

Lg. Block (up to **7** characters per line)



**ARNIE
JONES**

Script (up to **7** characters/one line only)

Arnie

NOTE: One line only for printing tees.

PRINTING TROUBLESHOOTING GUIDE

PROBLEM	CAUSE	SOLUTION
Printing is "broken up" missing letters or parts of letters 	Pad will not pick up ink - pressing too hard on scraper; this removes ink from letters	Use less pressure on scraper
	Pad will not pick up ink - pressing down too hard with plunger on printing plate	Press down lightly and rapidly on plate as in step number 5
	Pad will not clean - will not pick up ink	Clean pad (see Clean Up section)
	Ink dried in engraved letters of printing plate	Clean plate (see Clean Up section) and try again, taking less time in between steps.
	Ink too thick	Add a few drops thinner to ink bottle - shake well
Ink smudges on pad and on ball 	Not scraping quite hard enough, leaving too much ink on plate	Use a bit more pressure on scraper
	Ink is too thin - too much thinner added to ink	Leave top off ink bottle several hours until ink "thickens up"
Printing plate will not scrape clean	Old ink dried on scraper blade	Clean blade (see Clean Up section)

CLIP ALONG DOTTED LINES AND ENCLOSE WITH A CHECK OR M.O. TO:

DENNCO, INC.

21 Northwestern Dr., Salem, NH 03079

DESCRIPTION	QUANTITY	PRICE EA.	TOTAL
Plates (from other side)	_____	@ \$5.00	\$ _____
Red Ink	_____	@ \$3.00	\$ _____
Blue Ink	_____	@ \$3.00	\$ _____
Green Ink	_____	@ \$3.00	\$ _____
Black Ink	_____	@ \$3.00	\$ _____
Ink Thinner	_____	@ \$3.00	\$ _____
Clear Sealer	_____	@ \$3.00	\$ _____
TOTAL ITEMS ORDERED	_____	TOTAL	\$ _____

Send your check or money order to: **DENNCO, INC., 21 Northwestern Dr., Salem, NH 03079**

SHIP TO:

Name _____

Address _____

City _____ State _____ Zip _____

Please allow 14 days for processing.